

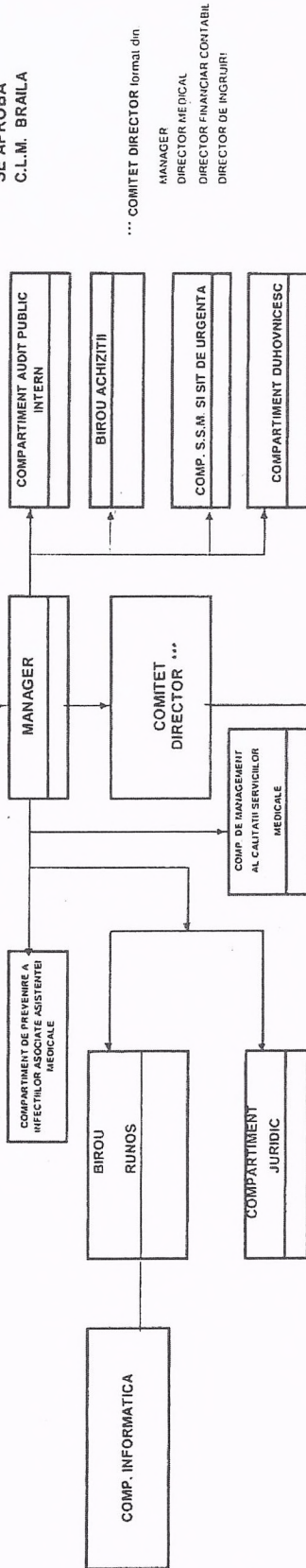
ORGANIGRAMA SPITALULUI DE PSIHIATRIE "SF. PANTELIMON" BRAILA

CONSILIUL LOCAL MUNICIPAL BRAILA

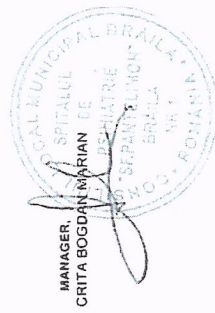
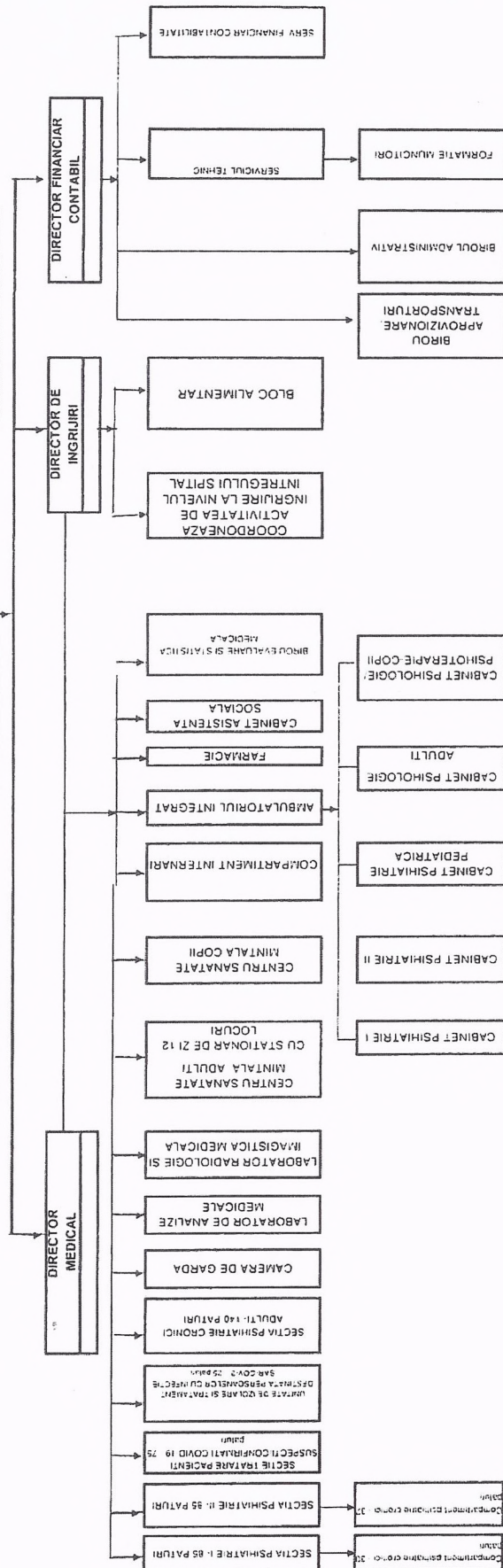
ANEXA NR. 1  
LA H.C.L.M. 320/20.07.2020

CONSILIUL DE ADMINISTRATIE

SE APROBA  
C.L.M. BRAILA



\*\*\* COMITET DIRECTOR format din  
MANAGER  
DIRECTOR MEDICAL  
DIRECTOR FINANCIAR CONTABIL  
DIRECTOR DE INGRUIRI



Nr. paturi 410  
Nr de posturi 429

DIRECTOR FINANCIAR CONTABIL  
DOBRESCU CAMELIA BEATRICE

